

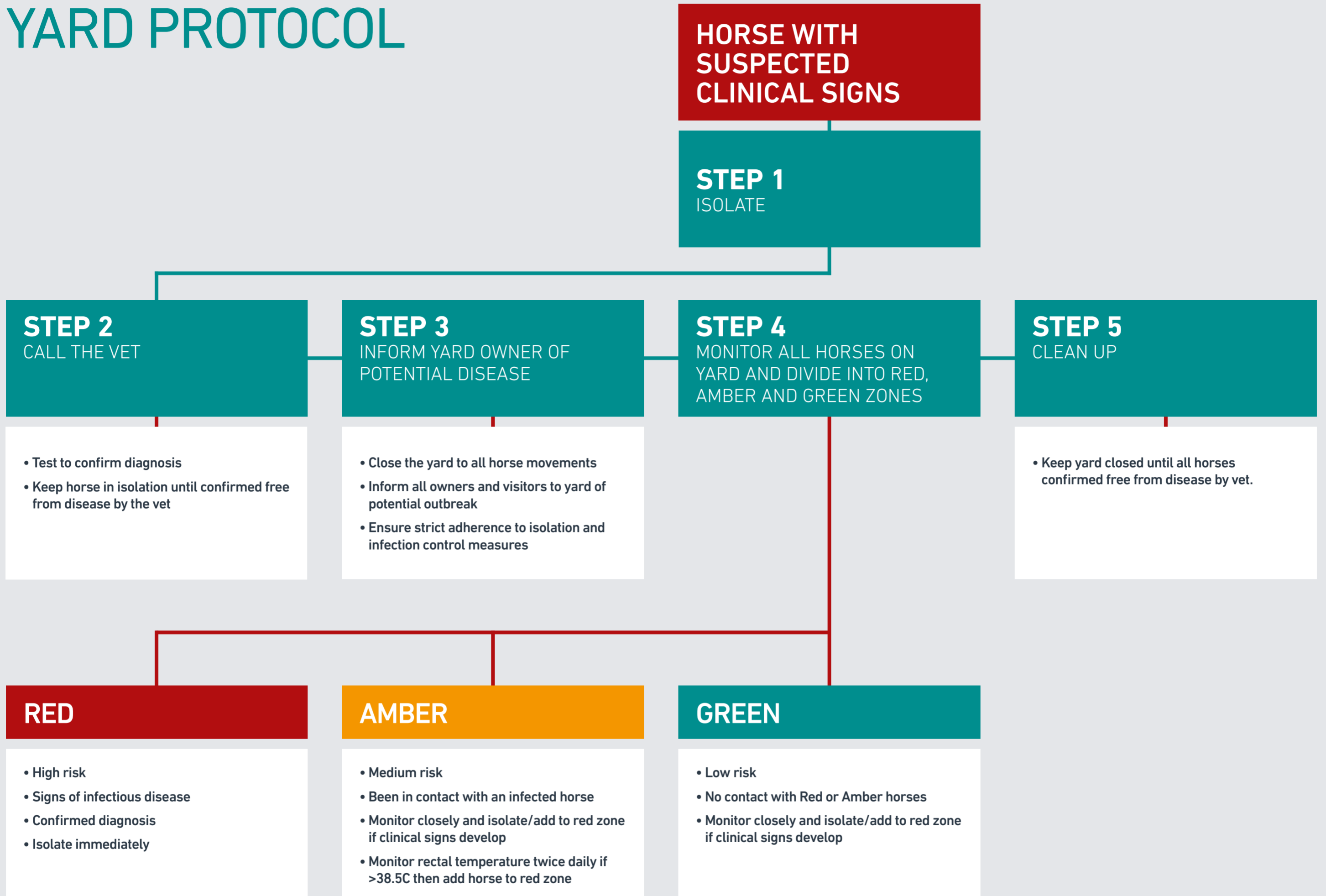
Yard Manager/Owner: _____

Contact Details: _____

Number of horses on yard: _____ Date: _____

Vet Details: _____

YARD PROTOCOL



Acting quickly to isolate horses with suspected infectious disease is fundamental in reducing the spread of the disease and controlling the outbreak quickly.

SIGNS WHICH INDICATE THE NEED TO ISOLATE INCLUDE:

- Cough
- Nasal discharge
- Swollen glands
- Raised temperature (>38.5C)
- Lethargy/reduced appetite
- Abortion
- Diarrhoea

ISOLATION FACILITIES (10-25M from other horses)

- Isolated stable in remote area of yard with a separate airspace to other stables or an isolated field.
- Foot disinfection areas and hand washing facilities should be available
- Use of protective clothing and gloves essential
- Use dedicated and clearly marked equipment, bedding and feed
- Restrict personnel access to essential only. Keep dogs and cats away
- Attend to healthy horses before attending those in isolation
- Horses should not leave isolation until free from disease as confirmed by your vet.

